



Martin Drive | Stafford | ST16 1GN

£440,000

 **Webbs**
estate agents

Summary

** LAST PLOT AVAILABLE ** NEW BUILD ** SHOW HOME FURNITURE INCLUDED ** BUYERS INCENTIVES EQUITY ** ASK US ABOUT PART EXCHANGE ** OPEN PLAN KITCHEN DINER ** SOUTH FACING GARDEN ** MASTER WITH DRESSING ROOM AND ENSUITE ** CALL BRANCH ON 01889 583377 FOR MORE INFORMATION **

The HERTFORD is a four-bedroom 3 storey home. With an open-plan kitchen dining/family area, utility, WC, this home is ideal for entertaining. On the ground floor, you will also have a dual aspect living room, perfect for you to relax in. The first floor benefits from a principal bedroom with dressing room, ensuite, a double bedroom and family bathroom. The second floor offers two further bedrooms and a shower room. The property benefits from solar panels and an EV charger.

All David Wilson Homes come with a 10-year NHBC Buildmark warranty – this means they have complied with the NHBC Standards which set out the technical requirements for design, materials and workmanship in new home construction. So you can buy one of their spacious new homes with confidence.

Key Features

- SHOW HOME - FURNITURE INCLUDED
- SOLAR PANELS AND EV CHARGER
- OPEN PLAN KITCHEN DINER
- UTILITY ROOM & GUEST WC
- PARKING
- FABULOUS DEVELOPMENT
- 10 YEARS NHBC BUILDERS WARRANTY
- 3 STOREY
- SOUTH FACING GARDEN
- SINGLE GARAGE

Rooms and Dimensions

ENTRANCE HALL

GUEST WC

LOUNGE

KITCHEN DINER

UTILITY

LANDING

MASTER BEDROOM

DRESSING ROOM

ENSUITE

BEDROOM TWO

FAMILY BATHROOM

BEDROOM THREE

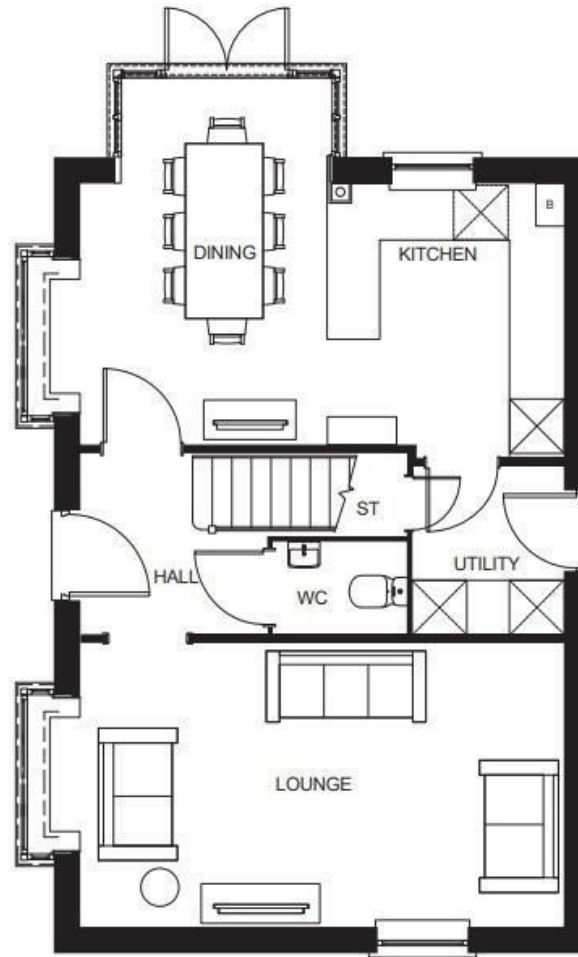
BEDROOM FOUR

SHOWER ROOM

REAR GARDEN







Webbs Estate Agents - endeavour to maintain accurate depictions of properties in Virtual Tours, Floor Plans and descriptions, however, these are intended only as a guide and purchasers must satisfy themselves by personal inspection.

Energy Efficiency Rating		Environmental Impact (CO ₂) Rating	
Current	Potential	Current	Potential
100-125 kWh/m ² /year A	100-125 kWh/m ² /year A	100-125 g/m ² /year A	100-125 g/m ² /year A
126-150 kWh/m ² /year B	126-150 kWh/m ² /year B	126-150 g/m ² /year B	126-150 g/m ² /year B
151-175 kWh/m ² /year C	151-175 kWh/m ² /year C	151-175 g/m ² /year C	151-175 g/m ² /year C
176-200 kWh/m ² /year D	176-200 kWh/m ² /year D	176-200 g/m ² /year D	176-200 g/m ² /year D
201-225 kWh/m ² /year E	201-225 kWh/m ² /year E	201-225 g/m ² /year E	201-225 g/m ² /year E
226-250 kWh/m ² /year F	226-250 kWh/m ² /year F	226-250 g/m ² /year F	226-250 g/m ² /year F
251-300 kWh/m ² /year G	251-300 kWh/m ² /year G	251-300 g/m ² /year G	251-300 g/m ² /year G
301-350 kWh/m ² /year H	301-350 kWh/m ² /year H	301-350 g/m ² /year H	301-350 g/m ² /year H
351-400 kWh/m ² /year I	351-400 kWh/m ² /year I	351-400 g/m ² /year I	351-400 g/m ² /year I
401-450 kWh/m ² /year J	401-450 kWh/m ² /year J	401-450 g/m ² /year J	401-450 g/m ² /year J
451-500 kWh/m ² /year K	451-500 kWh/m ² /year K	451-500 g/m ² /year K	451-500 g/m ² /year K

England & Wales EU Directive 2002/91/EC